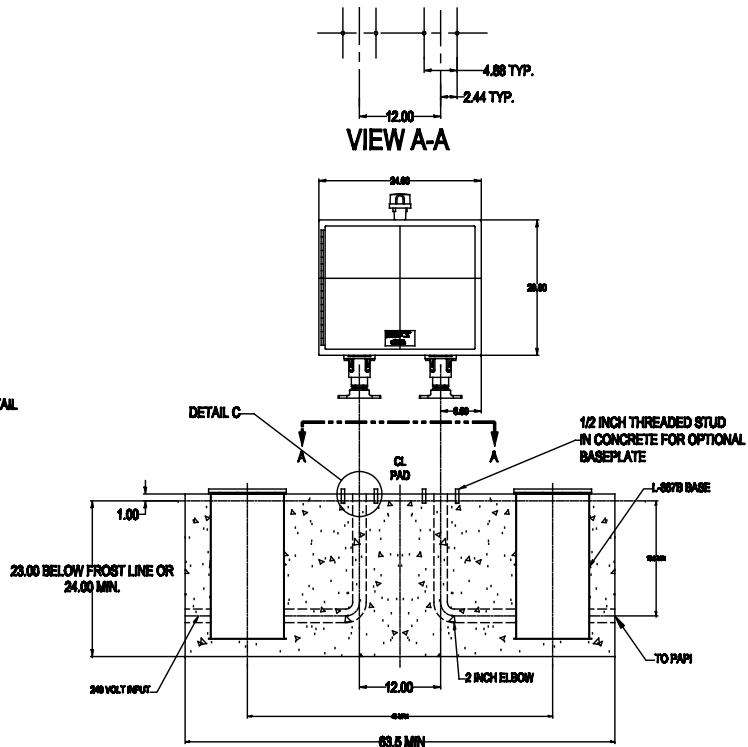
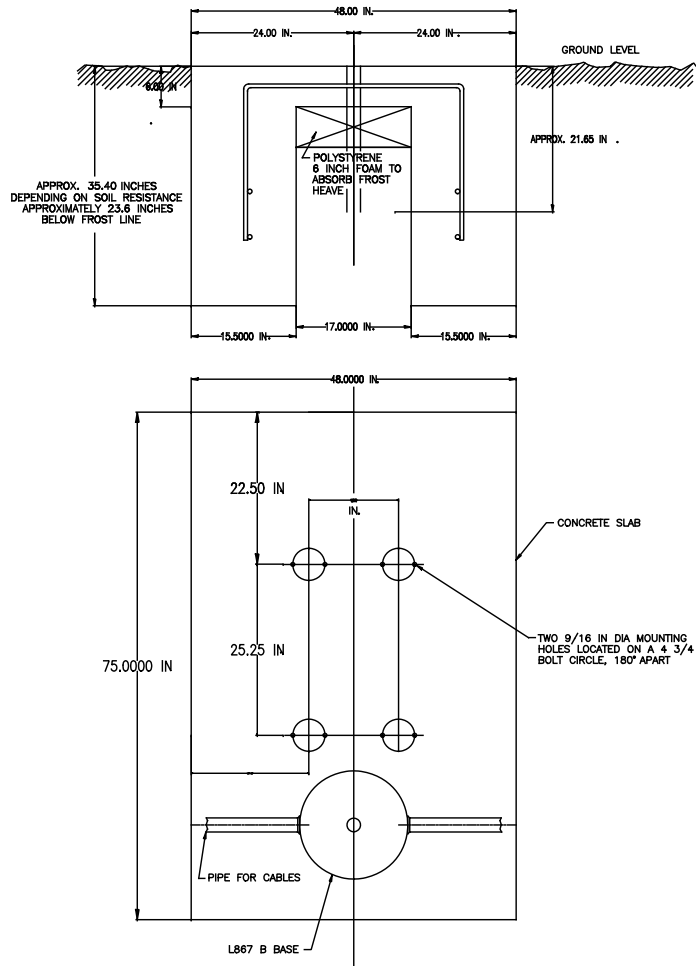
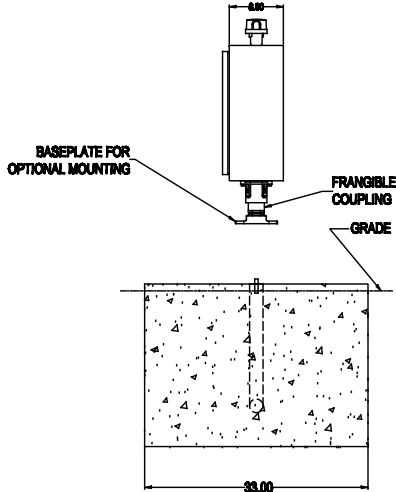


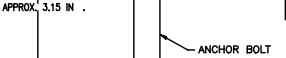
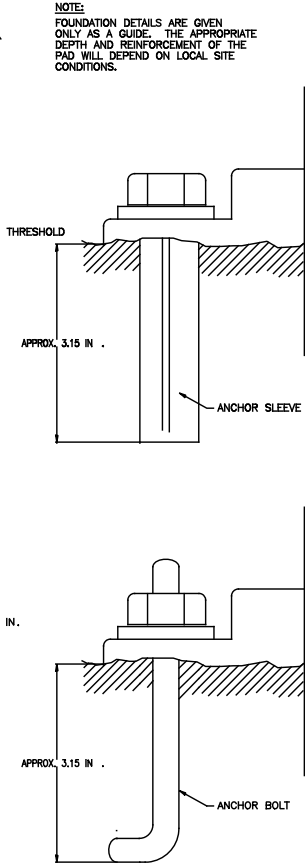
PAPI TYPICAL INSTALLATION



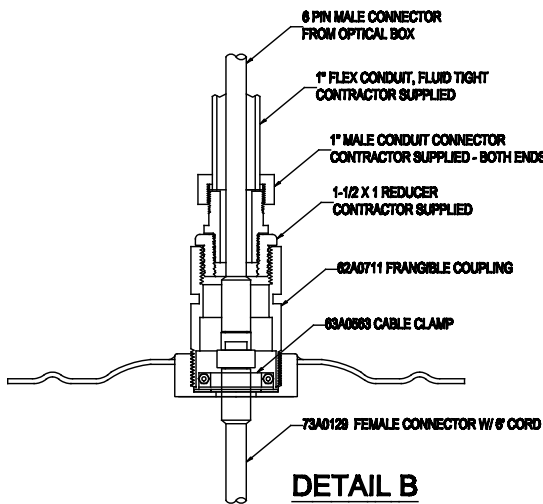
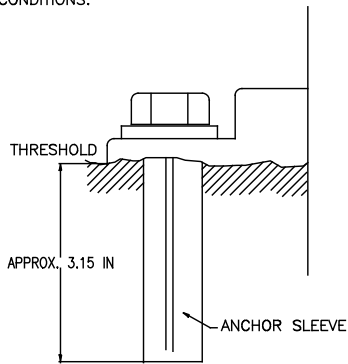
PAPI MASTER INSTALLATION (STYLE A ONLY)



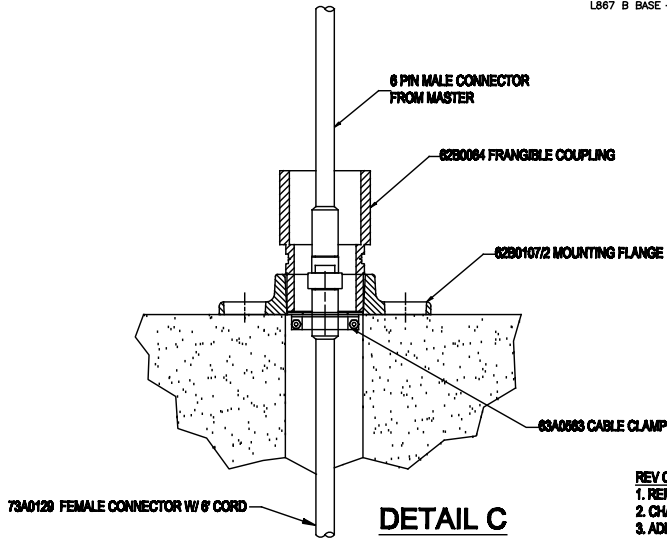
PAPI 4 LEG FOUNDATION DETAIL



NOTE:
FOUNDATION DETAILS ARE GIVEN
ONLY AS A GUIDE. THE APPROPRIATE
DEPTH AND REINFORCEMENT OF THE
PAD WILL DEPEND ON LOCAL SITE
CONDITIONS.



DETAIL B

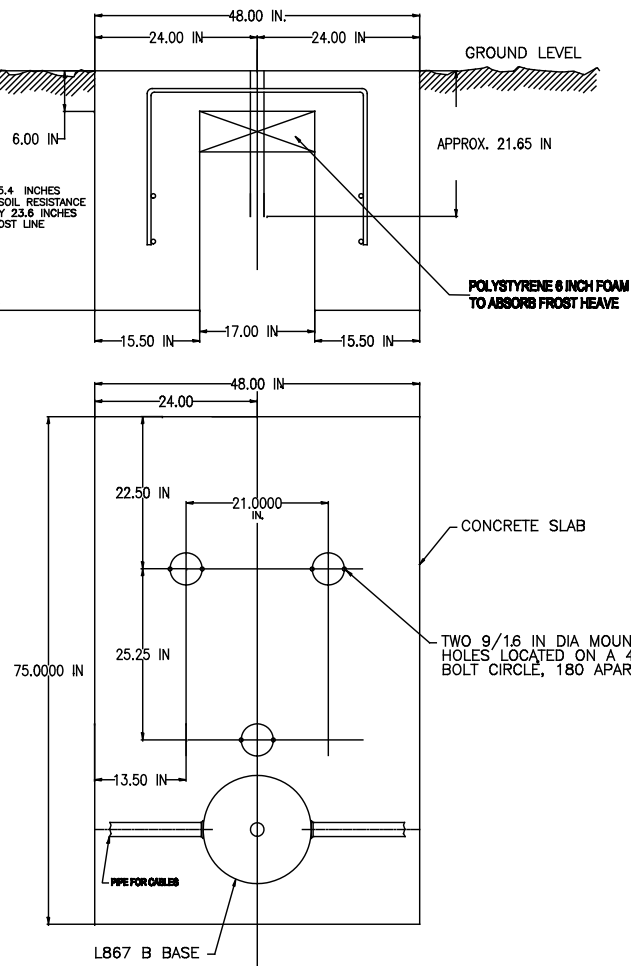


DETAIL C

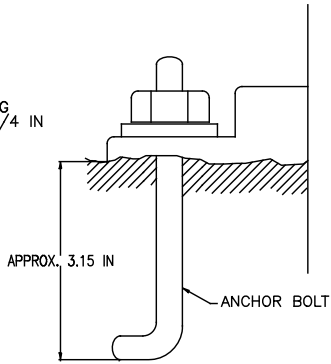
NOTES:
1. ADB AIRFIELD SOLUTIONS PART 44A4733/XXXX OR EQUAL.

REV C NOTES:
1. REMOVE VIEW D
2. CHANGE MASTER INSTALLATION CONCRETE PAD TO SHOW TWO BASE CANS.
3. ADD SH 1 DETAIL B & DETAIL C.

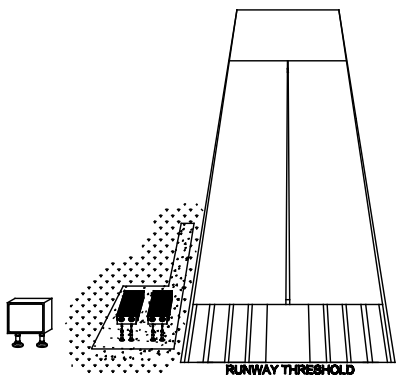
CAUTION:
THIS DRAWING IS ONLY INTENDED FOR USE AS GENERAL AIRFIELD SYSTEM DESIGN GUIDANCE. THE DESIGNER MUST VERIFY DESIGN WITH LOCAL CODES AND VARYING CHARACTERISTICS FOR EACH UNIQUE AIRFIELD APPLICATION.



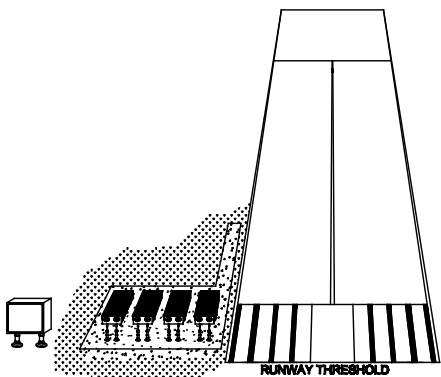
PAPI 3 LEG FOUNDATION DETAIL



FOOT FLANGE DETAIL



FOR L880 STYLE A TWO BOX SYSTEM



FOR L880 STYLE A FOUR BOX SYSTEM

CONTROLLED COPY			
Unauthorized duplication of this document in whole or part is prohibited. Initialed in RED ink below indicates authorized copy.			
INITIAL & DATE:			
ADB			
ADB Airfield Solutions 977 Gahanna Parkway, Columbus, Ohio 43230 Telephone: 614-861-1304, Fax: 614-864-2069			
DRAWING TITLE: L880 PAPI STYLE A MASTER AND SLAVE TYPICAL INSTALLATION L-880 / L-881			
D	3708	REVISE TITLE BLOCK	DTR 14AUG12
C	---	SEE REV C NOTES	DLR 02FEB09
B	---	ADDED VIEW "D"	DP3 30JAN09
A	---	PRODUCTION RELEASE	LWH 29MAR04
REV LEVEL	ECO NUMBER	REVISION DESCRIPTION	DRAWN BY REV DATE
ASSOCIATED DRAWINGS:	DRAWN BY:	DRAWN DATE:	
	LWH	29MAR04	
DRAWING NUMBER:			SHEET NUMBER:
N/A			1 of 2
117A0011			REV. D